

MODERN TOWN HOMES (LIMOGES)

1313 Sq. ft.

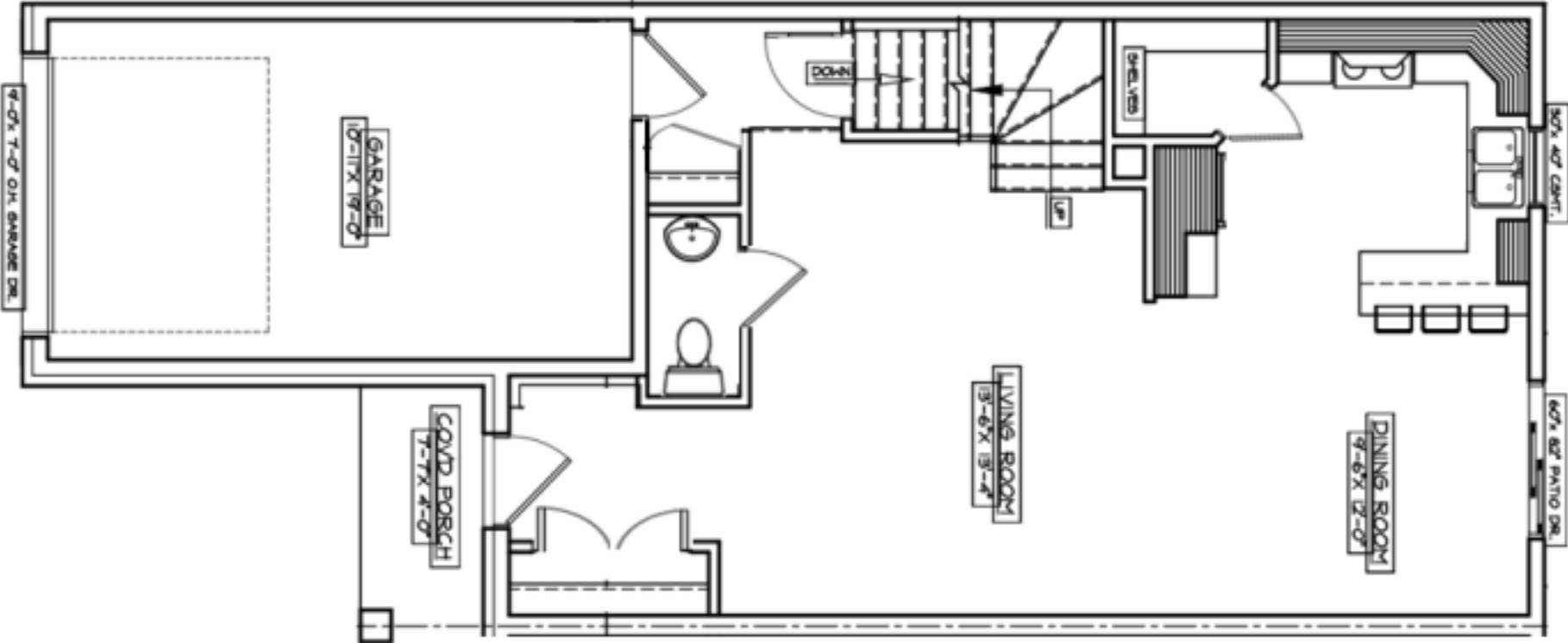


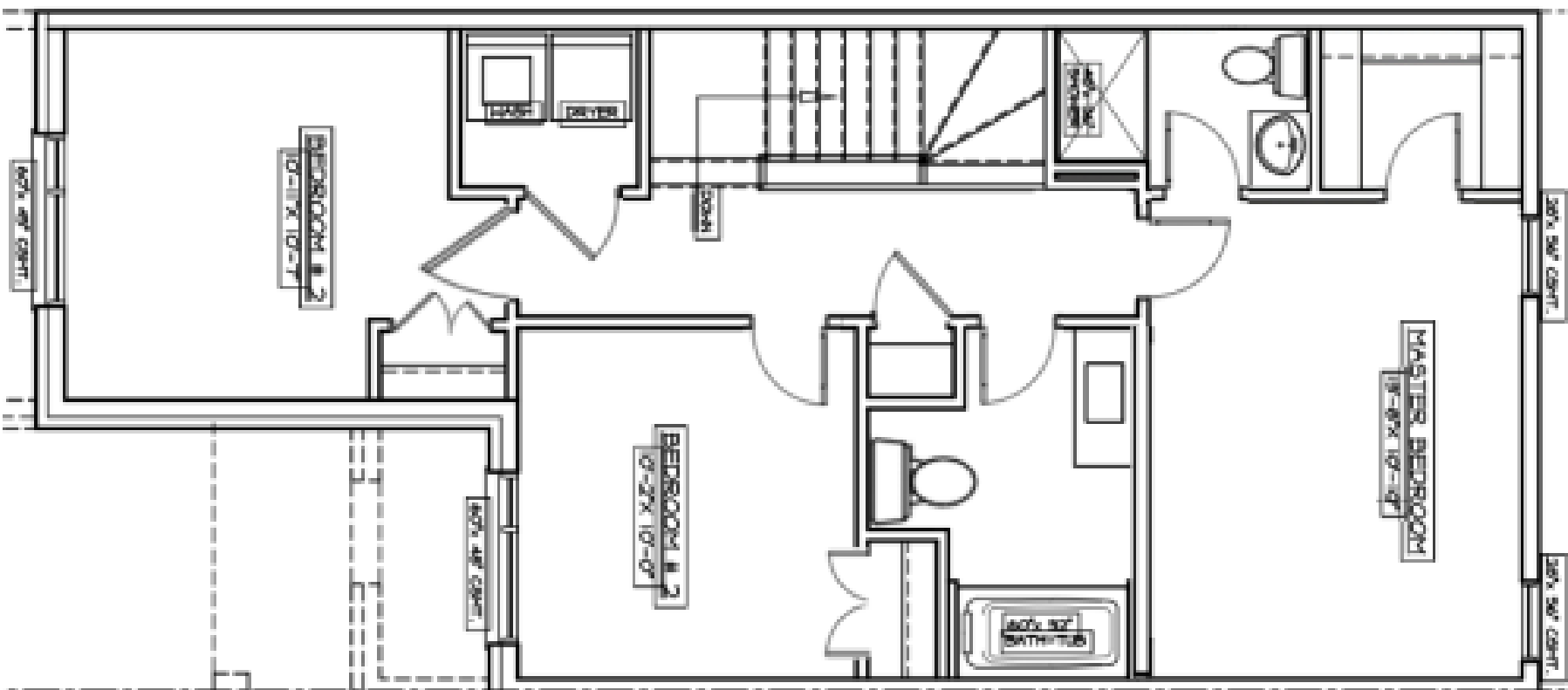
- Colour exterior front door, front windows & garage door
- Transom windows above garage
- Ceramic in kitchen, bathrooms and front entrance
- Hardwood/ceramic in dining room
- Hardwood in living room
- Square sink in main bathroom
- Square baseboards (no crown moulding)
- Conmore style interior doors with modern handles • Swing closet doors (some exceptions apply)
- Rough-in for dishwasher
- Water connection for fridge
- 5 pot lights (choice of where inside) & Exterior pot lights
- 2 paint colours throughout home
- Modern front windows and door
- Optional master en-suite available for \$9,500
- Walk in closet in Master with high/low rods & shelves

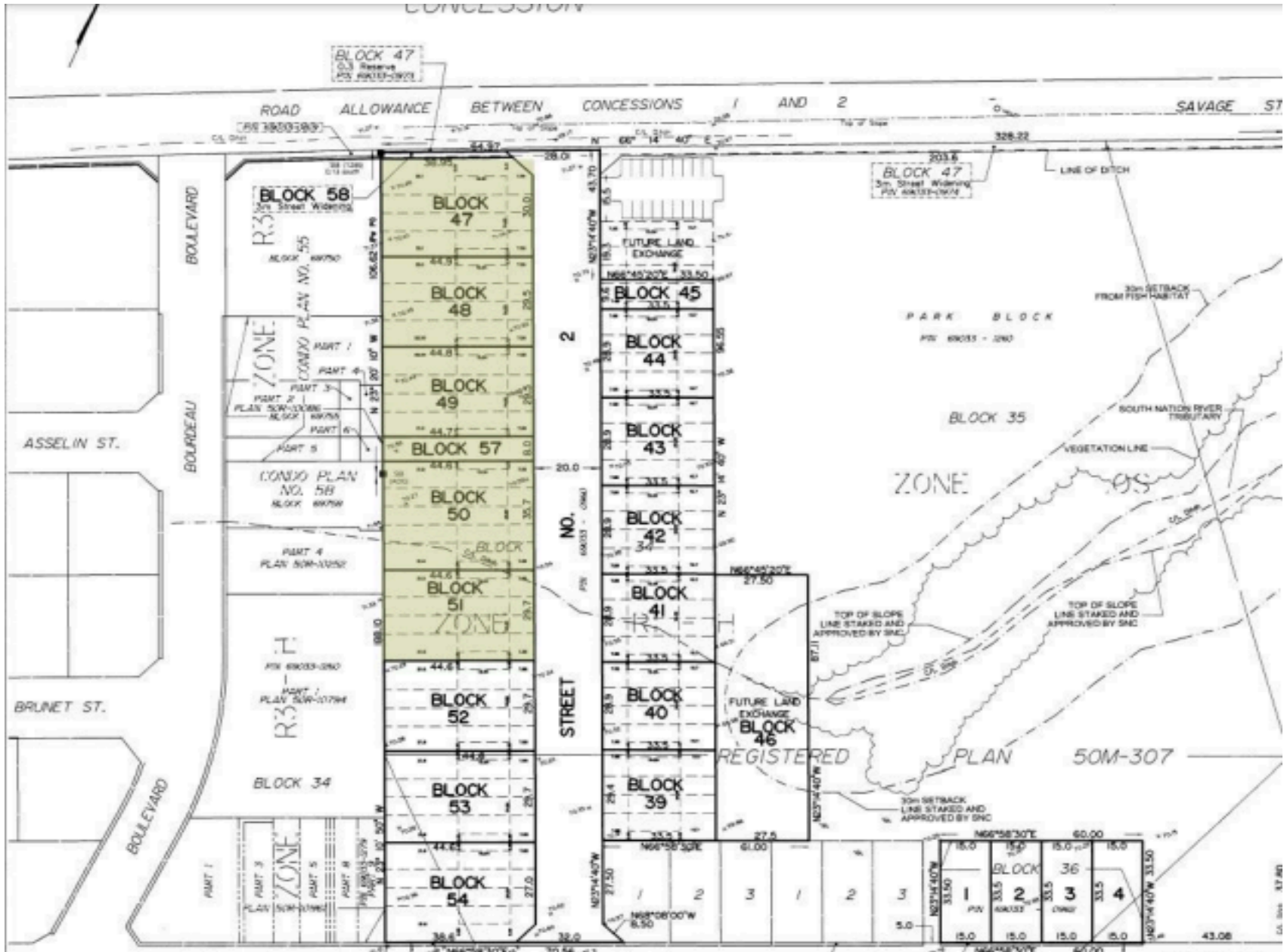
Plans, specifications, & measurements are subject to change without notice. Updated June 2020. E.&O.E.

MODERN TOWN HOMES

(LIMOGES) 1313 Sq. ft.







All corner units will have 10k premium