

41'-1"

36'-0"

41'-1"

36'-0"

KITCHEN  
9'-6" x 12'-4"

DINING ROOM  
11'-6" x 12'-4"

COVID DECK  
14'-0" x 6'-6"

LIVING ROOM  
13'-6" x 16'-5"

GARAGE  
21'-0" x 21'-7"

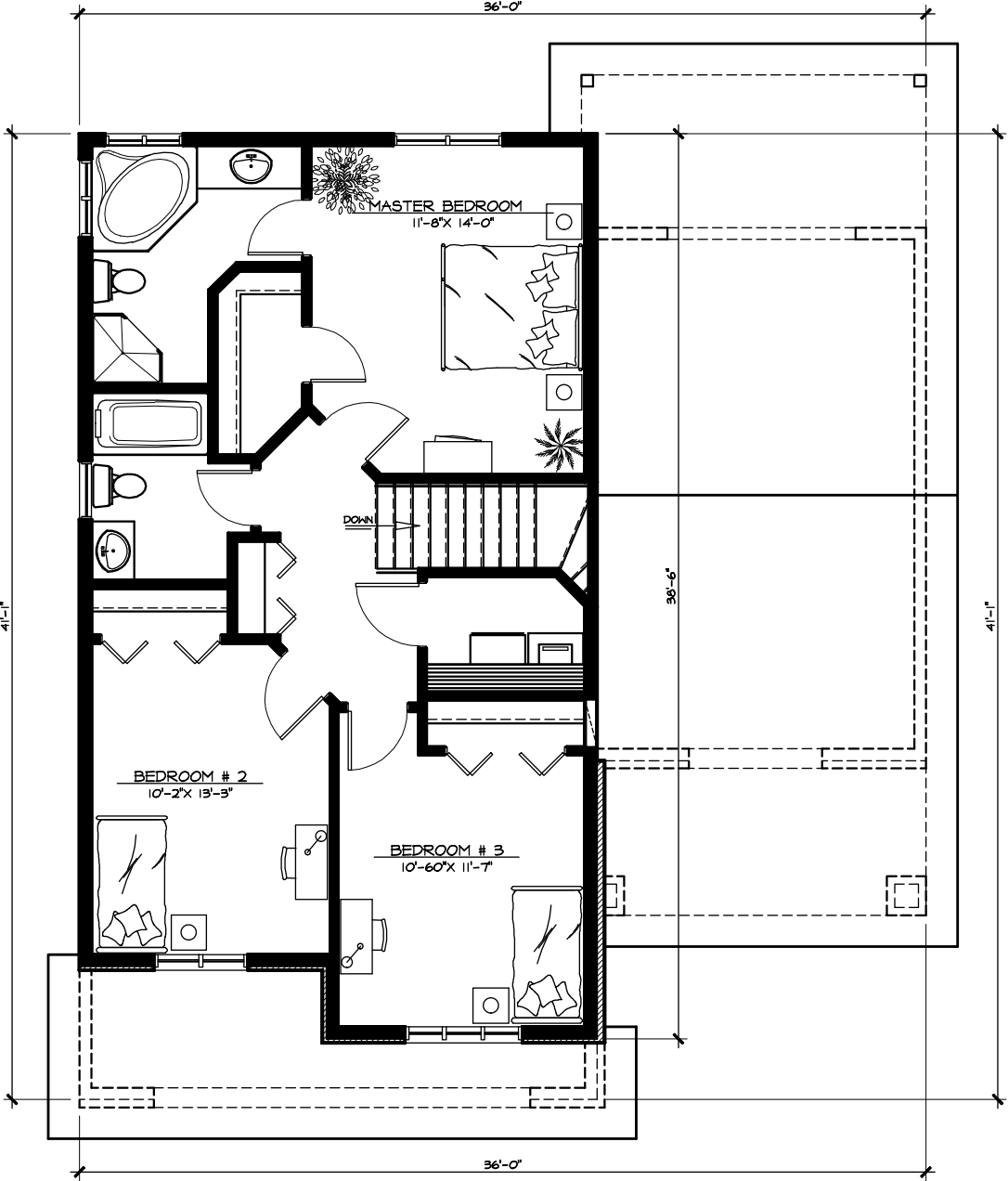
COVID STOOP  
13'-8" x 6'-3"

DOWN

SLOPED CL6

SLOPED CL6

14'-1" CL6



36'-0"

MASTER BEDROOM

11'-8" x 14'-0"

DOWN

BEDROOM # 2

10'-2" x 13'-3"

BEDROOM # 3

10'-6" x 11'-7"

36'-6"

41'-1"

41'-1"

36'-0"